



NORTH EAST CHRISTIAN UNIVERSITY

*A Ministry of the Council of Baptist Churches in Northeast India (CBCNEI) and Co Sponsored
by the Nagaland Baptist Church Council (NBCC)*

*Assured
NECU
Liberal
Scholarship*



PROSPECTUS



NORTH EAST CHRISTIAN UNIVERSITY



Vision

The vision of the university is to provide high quality education to diploma courses, undergraduate, postgraduate, and doctoral students. The university also aspires to contribute to the society through teaching and research to help achieve global sustainability. Further, the university aims to produce leaders in science and related disciplines.



Mission

To provide greater access for higher education to all and in particular to the socially and educationally unprivileged youth upholding the principle of social equity. To make learning in science and other knowledge streams exciting through excellent integrative teaching strategies driven by curiosity and creativity. To facilitate and promote entry into research at an early age through a flexible borderless curriculum and research projects. To encourage and facilitate inter-institutional and international exchange programs and collaborations in teaching and research.



MESSAGE



Greetings from the North East Christian University!

Thank you for considering to be a part of the NECU family.

We are a conventional University with lofty aims but down to earth practices. While offering the usual subjects in Social Sciences and Humanities, we also offer Medical Education courses and teaching in Advanced Religious Studies. There are also unique Post Graduate Diploma programmes in Emotional Healthcare (only one in Asia), Indigenous Studies and several Certificate courses for Vocational Educators, Social Enterprise, etc.

The Vision of the University is of a distinctive centre of excellence committed to integrating faith and knowledge, character and service, in transforming students towards empowerment. We may be small in number but ours is to produce upright, knowledgeable and compassionate citizens who will be leaders of the larger majority.

Welcome to our University. Let us join together in building a great community built on Truth and Liberty.

Prof. Dr. Darlando T. Khathing
Pro-Chancellor
North East Christian University

About Us



Recognized by University Grants Commission (UGC).



Estd. under North East Christian University Act 2012 Govt. of Nagaland.



A University with distinction under the Council of Baptist Churches in North East India (CBCNEI).



Recognized by the Quality Council of India as a PrCB (Personnel Certifying Body) for Traditional Community Healthcare Providers.



Accredited by the National Accreditation Board for Certification Bodies under ISO 17024:2012.



Member of the PHDCCI, New Delhi (established 1905).



Recognized by the CDSA of THSTI, Dept. of Biotechnology, Govt. of India, as Certifying Body for Clinical Professionals under Good Clinical Practices Professional Certification Scheme.



Recognized by the Indian Nursing Council (INC) and Nagaland Nursing Council (NNC).



One of the few Universities in India that provides Liberal Arts Education, a curriculum that has been structured for students to explore and discover their subject of interest.



NECU endeavors to create a stimulating environment in the Campus through various academic programmes and co-curricular activities in order to build character and personality as well as a sense of appreciation for the community in the students. These are achieved by hands-on experiences in the form of community service and Internship for the Undergraduate students.



Following up India's Look East Policy, the Northeast has become a frontier for the East in terms of political, logistical implications and for greater economic engagement with neighbouring countries of South East Asia and the Far East. Accordingly, courses in International Studies are offered.

Why NECU?

At North East Christian University (NECU), we believe education should shape both your future and your character. Envisaged by the Council of Baptist Churches in North East India (CBCNEI) and Co-Sponsored by Nagaland Baptist Church Council (NBCC), NECU stands for something greater than itself — a future where education uplifts everyone.

"This university isn't just ours. It's yours. It's a place for dreamers, doers, and those who believe in building something that lasts."

As Nagaland's first community-rooted university, NECU offers a space where students learn, grow, and find purpose.



Built for the Region, Open to All

NECU is the first university of its kind in the state—built for and by the people of the region, creating a sense of shared ownership and pride.



Courses That Match Your Ambition

From Diploma to PhD, explore programs in Arts, Nursing, Allied Health Sciences, and Religious Studies—designed to prepare you for life beyond the classroom.



Facilities That Support Your Journey

Classrooms, labs, and student spaces are designed for focused, practical, and modern learning.



Faculty Who Mentor, Not Just Teach

Learn from dedicated educators who take time to guide and support you.



Financial Assistance That Makes a Difference

Scholarships and support systems ensure that cost doesn't stand in the way of your education.



A Campus Built on Trust and Values

Respect, responsibility, and a shared sense of purpose shape every part of campus life.



Personalized Learning Environment

Small class sizes and a close-knit academic setting allow for personalized attention and meaningful student-teacher interaction.



Skill Development & Life Readiness

Students are trained in communication, critical thinking, digital literacy, and leadership—skills essential for today's evolving world.



Industry Exposure & Practical Training

Internships, fieldwork, and real-world learning ensure students graduate with both knowledge and experience.



Safe, Inclusive, and Student-Friendly Campus

Round-the-clock security and a culture of mutual respect create a safe and supportive environment for all students.



Connected for Tomorrow

Partnerships with industries, organizations, and institutions provide broader exposure and new opportunities.



Student Support Services

Academic counselling and mental health support help students navigate challenges and transitions.



Creative & Cultural Expression

Opportunities in arts, music, theatre, and cultural events encourage both individuality and community identity.



Encouragement for Entrepreneurship & Innovation

Support for entrepreneurial thinking with guidance, space, and resources for innovation, startups, and original ideas.



NORTH EAST CH

A UGC recognised

WWW

DIPLLOMA | U

- > English
- > Psychology
- > Political Science
- > International Relations
- > Business Administration
- > Linguistics
- > MA Teaching English as a Second Language
- > Nursing
- > Physiotherapy
- > Medical Laboratory &

ADMISS

**Liberal
NECU
Scholarship
Available**



Scan for Fee Details



Quality Education with First-rate Faculty. Most Affo



8131062849



EAST BLO

CHRISTIAN UNIVERSITY

University under Section 2f

www.necu.ac.in

UG | PG | PhD

Sciences

- > MA Christian Studies
- > MA Religious Studies

INTRODUCING:

- > History
- > Education
- > Sociology

ADMISSIONS OPEN

for 2026



rdable. Right Here in Dimapur, Nagaland.

OCK, BURMA CAMP

Scan to register and to avail
10% (UPTO RS 10000)
EXTRA FEE CONCESSION



HUMANITIES & SOCIAL SCIENCES PROGRAMMES

1. International Relations Programme



Overview:

The International Relations Programme examines the interactions among nations, governments, and international organisations. It introduces students to key areas such as diplomacy, conflict, security, trade, and development while developing analytical, research, and critical thinking skills needed to understand global challenges in an interconnected world. In line with India's Act East policy (AEP), the programme facilitates academic discourse and research to promote the policy.

Vision:

The programme aims to promote a deeper understanding of global affairs through academic inquiry, research, and meaningful discussion. It seeks to prepare students to engage thoughtfully with international issues while encouraging collaboration with national and international institutions.

Academic Activities:

The International Relations programme at NECU has signed a Memorandum of Understanding with St. Stephen's College, Delhi and is in the process of establishing a partnership with Royal Thimphu College, Bhutan. It also hosts the IR Café, a monthly forum where students and faculty members discuss important current issues in international relations field. The programme also held a meeting with the Ministry of External Affairs (MEA) Team to discuss the scope and promotion of Act East Policy (AEP) in the region.

Career Prospects:

- **Career Opportunities:**
Diplomacy, foreign services, policy analysis, international organisations, research, media, and development sectors
- **Higher Studies:**
International Relations, Public Policy, Global Studies, Strategic Studies, and related fields
- **Professional Sectors:**
Government agencies, international organisations, think tanks, NGOs, media, and academic institutions

FACULTY MEMBERS



Dr. Keneisenuo Solo
(Programme Coordinator)
Asst. Professor, MA, MPhil,
PhD, JNU



Dr. Chibenthung Yanthan
(IQAC Coordinator)
Asst. Professor, MA, MPhil,
PhD, JNU



Dr. Hutoka Sumi
Asst. Professor (Guest),
MA, MPhil, PhD,
University of Mumbai



Mr. Supongtems Longchar
Asst. Professor (Guest),
MA, MPhil, JNU



Dr. Vareching Valui
Asst. Professor (Guest),
MA, MPhil, PhD, JNU



Mr. Jungshimanen Jamir
Asst. Professor (Guest),
MA, (Pursuing EdD) Keele
University, UK

2. Political Science Programme

Overview:

The Political Science Programme offers a comprehensive study of politics, governance, rights, justice, citizenship, and international relations. It examines political systems in both national and global contexts while introducing students to political theory, comparative politics, Indian politics, public administration, and international politics.

Vision:

The programme aims to develop critical thinking and a practical understanding of politics and society, guided by ethical values and a commitment to justice.

Academic Activities:

The programme organises academic events, community outreach initiatives, and educational visits to strengthen student learning beyond the classroom. These activities provide opportunities for discussion, practical exposure, and a deeper understanding of political and social issues.

Career Prospects:

- **Career Opportunities:**
Civil services, policy analysis, political research, media, development and political strategy, and roles in national and international institutions
- **Higher Studies:**
International Relations, Public Policy, Global Studies, Development Studies, Gender Studies, Law, Governance, and Area Studies
- **Professional Sectors:**
Government organisations, NGOs and INGOs, research institutions, media, education, and international organisations

FACULTY MEMBERS



Ms. Khrielhoumenuo Suokhrie
(Programme Coordinator)
Asst. Professor (Guest),
MA, MPhil, PhD (Pursuing) JNU



Ms. Nagali Sumi
Asst. Professor (Guest),
MA, NECU, Dimapur



Ms. Zubeni Lotha
Asst. Professor (Guest),
MA, ICAFI University,
Chumoukedima



Mr. Thepfulhoukho Kuotsu
Asst. Professor (Guest),
MA, MPhil, PhD (Pursuing), JNU



3. English Programme (Literature, Linguistics & TESL)

Overview:

The English Programme offers a BA in English Literature, an MA in Teaching English as a Second Language (TESL), and a PhD in Linguistics. The programme develops skills in literary analysis, language teaching, research, communication, and critical thinking, preparing students for academic and professional contexts.

Vision:

The programme seeks to nurture culturally aware, critically engaged, and professionally competent individuals through effective communication, thoughtful inquiry, and meaningful research.

Academic Activities:

The programme regularly observes International Mother Language Day in line with themes set by UNESCO. Recent activities include a national seminar on “Exploring Languages and Literatures for Evolving Pedagogical Practices” in collaboration with ELT@I, a guest lecture on youth opportunities, and a book donation drive on International Literacy Day.

Career Prospects:

- **Career Opportunities:** Teaching, content writing, language training, editing, media, and research
- **Higher Studies:** English Literature, TESL, Linguistics, and Applied Linguistics
- **Professional Sectors:** ESL/EFL training institutes, academic institutions, and research organisations

FACULTY MEMBERS



Dr. H Salome Kinny
(Programme Coordinator)
Asst. Professor, MA, PhD, University of Hyderabad



Dr. Neisakuonuo Tungoe
Asst. Professor, MA, PhD & TESOL,
EFLU Hyderabad



Ms. Neiletuonuo
Asst. Professor (Guest),
MA TESL, NECU, Dimapur

4. BSc and MSc Psychology Programme

Overview:

The Psychology Programme explores the scientific study of mind and behaviour through teaching, research, and practical training. It develops skills in analysis, ethical practice, and application, preparing students for careers in mental health, education, research, and related fields.

Vision:

The programme aims to promote psychological understanding through ethical practice, research, and critical thinking, while preparing compassionate professionals who can contribute to mental well-being and address social and behavioural challenges.

Academic Activities:

The programme regularly organises academic and community outreach activities, including career workshops in schools, stress and anxiety awareness programmes, observance of World Suicide Prevention Day, the “Mind Matters” well-being assessment camp, experiential mental health training, and programmes for World Mental Health Day.



Career Prospects:

- **Career Opportunities:** Counselling and Mental Health Services, School and Educational Psychology, Industrial/Organisational Psychology, Health and Rehabilitation Settings, NGOs and Government Programmes, Research and Academia
- **Higher Studies:** MSc, MPhil, and PhD in Psychology and specialised areas
- **Professional Sectors:** Hospitals, rehabilitation centres, educational institutions, NGOs, research organisations, media, and independent counselling practices

FACULTY MEMBERS



Dr. Alino H Assumi
PhD in Psychology (Interdisciplinary)
Mahatma Gandhi University



Ms. Niutoli Tuccu
Asst. Professor (Guest),
MA, PhD (Pursuing) RGU, Guwahati



Ms. Yangerinla C. Sangtam
Asst. Professor (Guest),
MPhil Rehabilitation Psychology,
Osmania University



Ms. Limi K Yeptho
Asst. Professor (Guest),
MA, Nagaland University



Ms. Nenchu Kath
Asst. Professor (Guest),
MA, PhD (Pursuing), NU



Ms. Temsurenla Aier
Asst. Professor (Guest),
MSc, Martin Luther Christian
University, Shillong

5. Introducing:

The university is introducing new programmes in

SOCIOLOGY,

HISTORY, and

EDUCATION

to expand academic opportunities and strengthen teaching, research, and interdisciplinary learning in the social sciences and humanities.



MANAGEMENT PROGRAMME

1. Bachelor of Business Administration (BBA) & Master of Business Administration (MBA)

Overview:

The Department of Management offers undergraduate (BBA) and postgraduate (MBA) programmes designed to develop competent, ethical, and industry-ready professionals. The MBA programme provides dual specialization options in Marketing, Human Resource Management, and Finance, enabling students to gain multidisciplinary expertise. The curriculum combines strong academic foundations with practical exposure through industrial visits, group discussions, and placement support, helping students build leadership, adaptability, and professional skills required in today's dynamic business environment.

Vision:

The department aims to become a centre of excellence in management education by promoting innovation, ethical leadership, and critical thinking. It seeks to develop globally competent professionals through experiential learning, industry collaboration, and quality education that responds to evolving business and societal needs.



FACULTY MEMBERS



Dr. Imtinungsang Jamir
(Programme Coordinator)
Asst. Professor,
MCom, MBA, MPhil, PhD,
Pondicherry University



Dr. Obed Kent
Asst. Professor,
MBA, PhD, NEHU



Ms. Atoholi Chishi
Asst. Professor (Guest),
MBA, PhD (Pursuing), St. Joseph
University, Chumoukedima



Ms. Namsile
Asst. Professor (Guest),
MBA, PhD (Pursuing), Arunachal
University of Studies



Ms. Thounsiniu
Asst. Professor (Guest),
MBA, PhD (Pursuing), Nagaland
University



Mr. Amit Baishnab
Asst. Professor (Guest),
MCom, MBA,
PhD (Pursuing) NECU, Dimapur



Mr. Prasenjit Bhadra
Asst. Professor (Guest),
MBA, MCom, PhD (Pursuing) St.
Joseph University

Academic Activities:

- Group discussions on emerging corporate trends
- Observance of entrepreneurship and consumer awareness events
- Educational exposure tours every year, including field visits to Sikkim recently.
- Industry-oriented learning initiatives that strengthen practical understanding.
- The programme's academic collaboration with XLRI Xavier School of Management, Jamshedpur, adds significant value to the Management Programme. Established in 1949, XLRI is one of India's oldest and most respected business schools, widely recognized for excellence in management education, leadership development, and industry engagement. The collaboration can provide students with opportunities for academic interaction, expert lectures, faculty exchange, curriculum enrichment, and exposure to contemporary business practices.

Career Prospects:

- **Career Opportunities:**
Marketing, sales, human resource management, finance, banking, operations, business development, entrepreneurship, and consulting
- **Higher Studies:**
MBA, PGDM, M.Com., professional certifications (CA, CMA, CFA), and specialised programmes in management and related fields
- **Professional Sectors:**
Corporate organisations, banking and financial institutions, consulting firms, startups, government agencies, NGOs, and multinational companies

CENTRE FOR ADVANCED RELIGIOUS STUDIES

Overview:

The Centre for Advanced Religious Studies (CARS) is a hub of academic excellence dedicated to the study and advancement of Religious Studies and Theology. It offers a range of programmes designed to equip students with critical knowledge, research skills, and practical insights, emphasizing interdisciplinary approaches, service leadership, and ethical, holistic transformation.

Through its academic offerings, the Centre provides:

a) M.A. in Religious Studies and Christian Studies

This programme offers students a strong foundation in Religious Studies and Christian thought, encouraging critical engagement with biblical studies, ethics, interfaith dialogue, church history, and contemporary social issues.

b) PhD in Theology

The doctoral programme is designed for advanced academic research, enabling scholars to contribute original knowledge in areas such as theology, religious traditions, leadership, and social transformation.

c) Doctor of Ministry (DMin)

This professional doctoral programme equips ministry practitioners with advanced theological reflection and practical skills for leadership, contextual ministry, and transformative engagement in faith communities.

The programmes combine theoretical foundations with contextual application, encouraging students to explore diverse areas of study while addressing contemporary global and local concerns. CARS adopts an interdisciplinary and globally connected approach, bringing together diverse perspectives and fostering a rich multicultural learning environment. Whether pursuing advanced research or professional ministry, students are prepared to contribute meaningfully to academia, faith communities, and society at large.

FACULTY MEMBERS



Rev. Dr. Narola Imchen
Director CARS
MTh, DTh, Serampore
University



Dr. Albert Chawang
Assistant Professor
MTh, PhD, SHUATS



Dr. AS Pillarson
Assistant Professor
MPhil, PhD,
Pondicherry University



ALLIED HEALTH SCIENCES PROGRAMMES

1. Bachelor of Physiotherapy (BPT)

Overview:

The Bachelor of Physiotherapy (BPT) programme combines quality academic instruction with extensive clinical training to prepare skilled and compassionate healthcare professionals. Through a balanced approach of theoretical learning and hands-on practice, students develop the ability to assess, diagnose, treat, and rehabilitate patients across a wide range of healthcare settings. The programme emphasizes patient-centered care, professional ethics, and practical competence to meet the growing demands of modern physiotherapy practice.

Vision:

The department aims to develop competent physiotherapy professionals equipped with sound knowledge, clinical expertise, and a strong professional attitude. It seeks to nurture evidence-based practitioners skilled in clinical reasoning, assessment, diagnosis, and patient management while promoting critical thinking, ethical practice, and a commitment to lifelong learning.



Academic Activities:

- Organized a webinar on “Introduction to Space Physiotherapy – Beyond Gravity: Exploring the Frontier of Space Physiotherapy”
- Conducted a community health camp in collaboration with Integrated AYUSH Hospital, Dimapur
- Educational and exposure visit to Kanyakumari

Career Prospects:

- **MPT in:** Musculoskeletal Science, Neuroscience, Cardio-Pulmonary Science, Sports Science, Pediatrics and neonatal science, Obstetrics and Gynecology (OBG), Oncology, Community Rehabilitation
- **Professional sectors:**
 - Hospitals and nursing homes, Physiotherapy Clinics, Sports club/centres, Wellness Rehabilitation centres, Academic and Research institutions

FACULTY MEMBERS



Dr. Naongmuong A (PT)
(Programme Coordinator)
MPT, Sumandeep Vidhyapeeth



Dr. Chanresem Kasar (PT)
MPT, Royal Global University



Dr. Likivi (PT)
BPT, Assam Downtown University



Dr. Jasmine Kithan (PT)
MPT, GEA National College



Dr. Enibemo T Ovung (PT)
MPT, Sharda University

2. Medical Laboratory Science (MLS)



Overview:

The Department of Medical Laboratory Science (MLS) prepares students in laboratory diagnostics essential for disease detection, treatment, and disease prevention. The programme covers clinical biochemistry, microbiology, hematology, and pathology, combining academic learning with practical laboratory training. Aligned with the National Commission for Allied and Healthcare Professions curriculum, it develops the technical competence, analytical skills, and professional accuracy required in modern healthcare laboratories.

Vision:

To develop competent, ethical, and skilled medical laboratory professionals who contribute effectively to healthcare services, diagnostics, and research in accordance with national and global standards.

Academic Activities:

The department promotes professional learning through:

- Clinical training in affiliated hospitals
- Public health screening initiatives
- Student participation in diagnostic camps
- Faculty research publications in recognized journals

Career Prospects:

- **Career Opportunities:**
Medical Laboratory Technologists, Clinical Research Assistants, Clinical Lab Managers, Quality Control Officers, Molecular Lab Technologists
- **Higher Studies:**
Master of Medical Laboratory Science, M.Sc. in disciplines like Microbiology, Biochemistry, or Biotechnology, MBA in Hospital or Healthcare Management Medical
- **Professional Sectors**
In Hospitals, Diagnostic labs, Blood banks, pharmaceutical companies, public health organizations, Research institutions

FACULTY MEMBERS



Mr. Pratap Singh Yadav
(Programme Coordinator)
Masters in Medical Laboratory
Technology (MMLT)



Ms. Liangsi Hallam
Masters in Medical Laboratory
Technology (MMLT)



Ms. Sentitula Changkija
Masters in Medical Laboratory
Technology (MMLT)



Ms. Meribeni P Tungoe
BSc, Diploma in Medical Laboratory
Technology (DMLT)

CENTER FOR MEDICAL EDUCATION & RESEARCH (CMER)

1. Nursing Programme (GNM & B.Sc. Nursing)

Overview:

The Nursing Programme (GNM & B.Sc. Nursing) is a professional academic programme designed to prepare students with a strong foundation in healthcare theory and clinical practice. The curriculum combines classroom learning with supervised hospital training, enabling students to deliver quality patient care and respond to the evolving healthcare needs of society.

Vision:

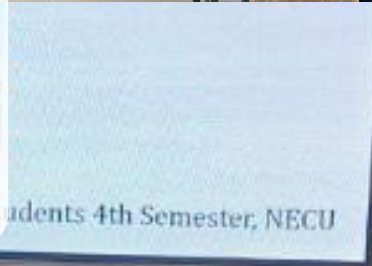
The department aspires to be a model of excellence in nursing education by developing globally competent nurses and midwives who serve with professionalism, compassion, and ethical responsibility.

Academic Activities:

A significant achievement of the department is the representation of its nursing students at the 30th and 31st National Student Nurses' Association of India Biennial Conferences held in New Delhi and Pune, which reflects the department's commitment to academic excellence and professional development. Furthermore, students undergo clinical internships at Sakra World Hospital, Bangalore, thereby gaining extensive practical exposure and strengthening their clinical competencies in real-world healthcare settings.

Career Prospects:

Graduates can pursue careers in hospitals, community health centres, nursing homes, public health organizations, and educational institutions as staff nurses, nurse educators, clinical supervisors, and healthcare administrators.



FACULTY MEMBERS



Ms Rongsenkumla L Ozukum
(Programme Coordinator)
MSc. Nursing, RGUHS, Bengaluru



Ms Athuo Saziini
MSc.Nursing, RGUHS, Bengaluru



Mr Meribemo PM Lotha
MSc Nursing Vinayaka Missions
Research Foundation, Salem; Tamil
Nadu



Ms Apao Hravine Neha
MSc.Nursing, Bharati Vidyapeeth
University.



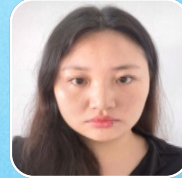
Ms V kivihoi Achumi
Msc Nursing, SSUH
Guwahati



Ms Yhunsinle Tep
MSc Nursing, SSUHS, Guwahati



Ms Rovino Khate
Msc Nursing,
Sikkim Manipal University



Ms Shongmo N
M.Sc Nursing, Kaloji Narayana Rao
University of Health Sciences



Ms. Ruvivono Hibo
MSc Nursing, Assam Downtown
University



Ms. Kapuw Kaini
BSc Nursing, CIHSR, Dimapur



Ms. Benjungyala L
Bsc Nursing, CIHSR, Dimapur



Ms. Maibi Naiding
Bsc Nursing, CIHSR, Dimapur



Ms. Imliwapangla Ao
B.Sc Nursing, CIHSR, Dimapur



Ms. Y Rhondeno Odyuo
BSc.Nursing, CIHSR, Dimapur



Mr. Subranil Mahajan.
B.sc Nursing, Tripura University



Ms. Echibeni Patton
BSc. Nursing, CIHSR, Dimapur

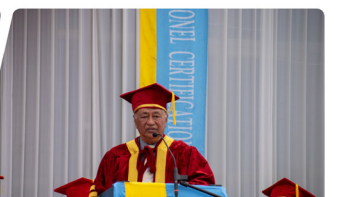


Ms. Bendangkokla Longkumer
Ms Nursing, SSUHS, Guwahati



Ms. Pfokrehe Asani
Ms Nursing, RGUHS, Bengaluru







HUMANITIES & SOCIAL SCIENCES

UG PROGRAMMES - 3 YEARS

Programs	Particulars	1 st Sem	2 nd Sem	3 rd Sem	4 th Sem	5 th Sem	6 th Sem	Total
BA BBA B.Sc. (Psy)	Admission Fee	8500	8000	8850	8500	9000	9000	₹51,850
	Semester Fees	12000	9000	9000	9000	9000	9000	₹57,000
	Examination Fees	400	400	600	600	600	600	₹3,200
Grand Total: INR One Lakh Twelve Thousand Fifty only								₹1,12,050

PG PROGRAMMES - 2 YEARS

Programs	Particulars	Amount
MA- Pol Science MA- IR MA- English (TESL) MA – Linguistics	Admission Fee (Registration, Development, ID Card, Medical, Student Welfare)	₹8000
	Semester Fees @ Rs. 28,000 x 4 Semesters	₹1,12,000
	Examination Fees @ 800 x 4 Semesters	₹3,200
Grand Total: INR One Lakh Twenty Three Thousand Two Hundred only		₹1,23,200

MSC PSYCHOLOGY - 2 YEARS

Particulars	Amount
Admission Fee (Registration, Development, ID Card, Medical, Student Welfare)	₹8,000
Semester Fees @ Rs. 35,000 x 4 Semesters	₹1,40,000
Examination Fees @ 800 x 4 Semesters	₹3,200
Grand Total: INR One Lakh Fifty One Thousand Two Hundred only	₹1,51,200

MBA - 2 YEARS

Particulars	Amount
Admission Fee (Registration, Development, ID Card, Medical, Student Welfare)	₹8000
Semester Fees: 40000x4 Semesters	₹160000
Examination Fees @ 800 x 4 Semesters	₹3,200
Grand Total: INR One Lakh Seventy One Thousand Two Hundred only	₹1,71,200

Ph.D - 3-5 YEARS

Ph.D. Political Science | Ph.D. International Relations | Ph.D. English | Ph.D. Linguistics |
Ph.D. Management | Ph.D. Psychology

Particulars	Amount
Admission Fee (Registration, Development, ID Card, Medical, Student Welfare)	₹9,400
Semester Fees: ₹40,000 per semester	

CENTRE FOR ADVANCED RELIGIOUS STUDIES (CARS)

MA - 2 YEARS

Programs	Particulars	Amount
MA - Christian Studies	Semester Fees: 20000x4 Semesters	₹80,000
MA - Religious Studies		

DMIN - 2-4 YEARS

Particulars	Amount
Admission Fee (Registration, Development, ID Card, Medical, Student Welfare)	₹9,400
Semester Fees: ₹40,000 per Semester	

COURSES UNDER CENTRE FOR MEDICAL EDUCATION & RESEARCH (CMER)

Sl. No.	Course	Eligibility	Duration	Internship	1st Year	2nd Year	3rd Year	4th Year	Total
1	BSc Nursing	Pass in 12th or equivalent with Physics, Chemistry & Biology	4 Years	NA	1,40,000 2 Installments (70000x2)	1,40,000 2 Installments (70000x2)	1,20,000 2 Installments (60000x2)	1,00,000 2 Installments (50000x2)	₹5,00,000
2	GNM (NSG)	Pass in 12th or equivalent	3 Years	NA	1,00,000 3 Installments (40000+30000+30000)	1,00,000 3 Installments (40000+30000+30000)	1,00,000 3 Installments (40000+30000+30000)	NA	₹3,00,000
3	BPT	Pass in 12th or equivalent with Physics, Chemistry & Biology	4 Years	1 Year	80,000 2 Installments (40000x2)	80,000 2 Installments (40000x2)	80,000 2 Installments (40000x2)	80,000 2 Installments (40000x2)	₹3,20,000
4	BMLS	Same as above	3 Years	1 Year	70,000 2 Installments (35000x2)	70,000 2 Installments (35000x2)	70,000 2 Installments (35000x2)	35,000 1 Installment	₹2,45,000
5	DMLS	Same as above	2 Years	6 months	60,000 2 Installments (30000x2)	60,000 2 Installments (30000x2)	30,000 1 Installment	NA	₹1,50,000

OTHER PAYABLE FEES

Sl. No.	Particulars	Nursing	BPT	MLS
1	Enrollment/Registration Fees	₹20000	₹40000	₹40000
2	Development & Establishment Fees	₹5000	₹10000	₹10000
3	Examination Fees per Semester	₹600	₹600	₹600
4	Graduation/Certificates	As per NECU Notification		
5	Educational Tour/Conference (Compulsory to attend minimum two programmes in the entire course)	As per CMER Notification		
6	Uniforms	₹3700	₹3700	₹3700
7	ID Card	₹200	₹200	₹200
8	Bonafide letter	₹100	₹100	₹100
9	Loan Papers	₹500	₹500	₹500
10	Special Clinical Training (Out Station Posting)	As per Actual		
11	Placement Registration (Optional) to be paid during the final year	₹20,000		

HOSTEL FEE STRUCTURE

NURSING HOSTEL

Hostel Admission (Non-refundable)	5500 (for Hostel Kit)
Boarding & Mess Fees	₹5500 monthly (66000 per year)
Hostel Maintenance Fee	₹300 monthly

ALL OTHER HOSTELS

Hostel Admission (Non-refundable)	3000 Yearly (Establishment & Maintenance)
Hostel Kit	₹4000 (for Basic Hostel items)
Boarding & Mess Fees (Monthly)	₹5500 per month (66000 per year)



NORTH EAST CHRISTIAN UNIVERSITY

A UGC recognised University under Section 2f

www.necu.ac.in

CERTIFICATE PROGRAMMES

KOREAN LANGUAGE
in collaboration with
Vision College of Jeonju,
South Korea

PG DIPLOMA IN EMOTIONAL HEALTH CARE
in collaboration with
Transform4Life,
Melbourne, Australia

PG DIPLOMA IN INDIGENOUS STUDIES
in collaboration with
Bethesda Khankho Institute,
Churachandpur

CERTIFICATE ON VOCAL EDUCATOR COURSE
in collaboration with
MuzikEdu, New Delhi

**GERMAN LANGUAGE TRAINING AND PLACEMENT
(FOR NURSING STUDENTS)**
in collaboration with
Workforce Europe, Germany

CERTIFICATE COURSE IN MEDICAL LAB TECHNOLOGY
in collaboration with
Apex Diagnostic Centre, Dimapur

**CERTIFICATE COURSE FOR TRAINING IN COUNSELLING
PSYCHOLOGY**
in collaboration with
Potter's Touch

**INHOUSE CIVIL SERVICES & COMPETITIVE
EXAMS PREPARATION**
in collaboration with
PrepSchool for Civil Services

Scan for Fee Details



Quality Education with First-rate Faculty. Most Affordable. Right Here in Dimapur, Nagaland.



8131062849



EAST BLOCK, BURMA CAMP

Scan to register and to avail
10% (UPTO RS 10000)
EXTRA FEE CONCESSION





CONTACT DETAILS:

General enquiries For admissions:

admissions@necu.ac.in
+91-8131 06 2849

Vice Chancellor

vicechancellor@necu.ac.in

Centre For Medical Education & Research (CMER)

cmer@necu.ac.in
+91-9916 15 9191

Registrar

registrar@necu.ac.in

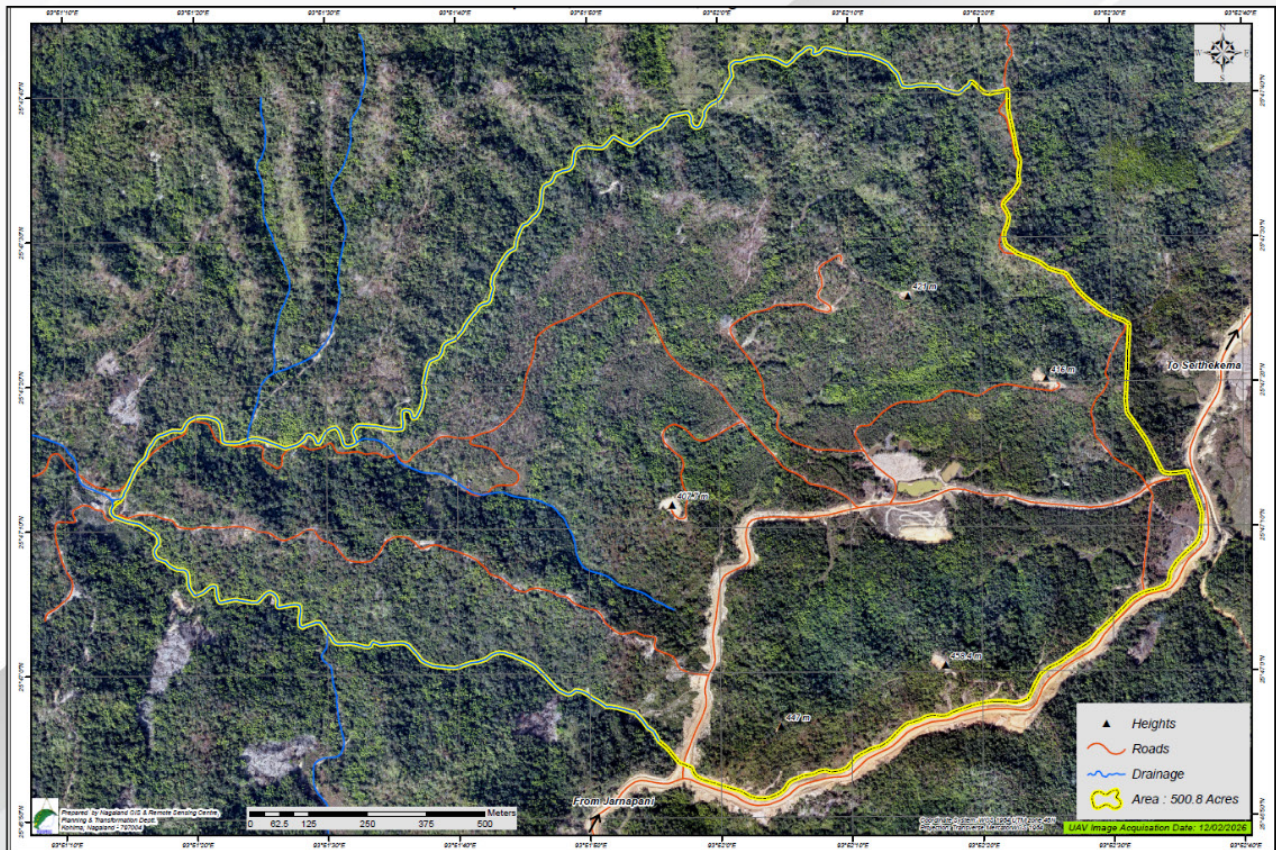
Centre for Advanced Religious Studies (CARS)

cars@necu.ac.in
+91-9435 49 2220

AR (Administration & Finance)

peshath@necu.ac.in

*Aerial Image of North East Christian University (NECU) (Area)
Medziphema, Chumoukedima, Nagaland*



NECU Main Campus
Medziphema